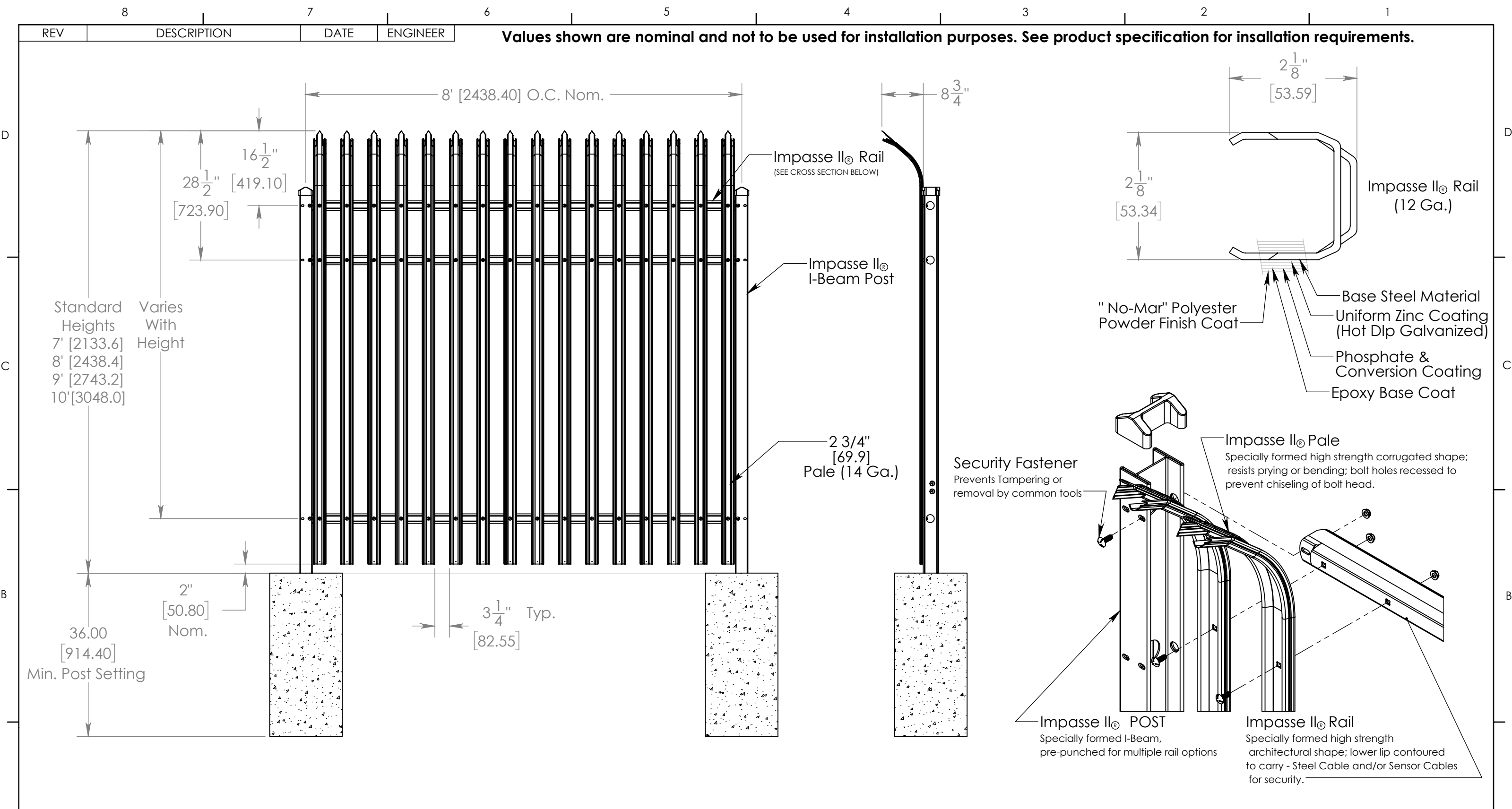


REV	DESCRIPTION	DATE	ENGINEER

Values shown are nominal and not to be used for installation purposes. See product specification for insallation requirements.



Note:  
 1.) Additional heights available on request.  
 2.) Third rail optional. (some heights noted require the third rail.)  
 3.) 3" [76.2] x 12 Ga. I-Beam recommended for 7' [2133.6] & 8' [2438.4] heights.  
 4.) 4" [101.6] x 11 Ga. I-Beam recommended for 9' [2743.2] & 10' [3048.0] heights.

<b>NOTICE TO PERSONS RECEIVING THIS DRAWING AND/OR TECHNICAL INFORMATION</b> Ameristar Perimeter Security USA Inc claims propriety rights to the material disclosed hereon. This drawing and/or technical information is issued in confidence for engineering information only and may not be reproduced or used to manufacture anything shown or referred to hereon without direct written permission from Ameristar Perimeter Security USA Inc to the user. This drawing and/or technical information is the property of Ameristar Perimeter Security USA Inc and is loaned for mutual assistance to be returned when its purpose has been served.	<b>UNLESS OTHERWISE SPECIFIED TOLERANCES</b> X.X ± .06 X.XX ± .03 X.XXX ± .02 ANGLES ± 0.5° FRACTIONS ± 1/8 SURFACE FINISH $\sqrt{63}$	DRAWING COMPLIES WITH ASME Y14.5M - 1994	MATERIAL SEE BOM		<b>IMPASSE II GAUNTLET 2 OR 3 RAIL</b>		
		INCH MM	HEAT TREATMENT	DATE CREATED 1/2/2019	DRAWN BY trasmi	DESIGNED BY trasmi	
<b>ASSA ABLOY</b> Ameristar Perimeter Security USA Inc Tulsa	SURFACE/FINISH	MASS 814.80 lb	VOLUME 15519.63 in <sup>3</sup>	SURFACE AREA 29155.11 in <sup>2</sup>	DOCUMENT ID	SCALE 1:32	SIZE B
	THIRD ANGLE PROJECTION	MASS 814.80 lb	VOLUME 15519.63 in <sup>3</sup>	SURFACE AREA 29155.11 in <sup>2</sup>	DRAWING NUMBER (ALT ID) <b>3GISO</b>		LEGACY ID