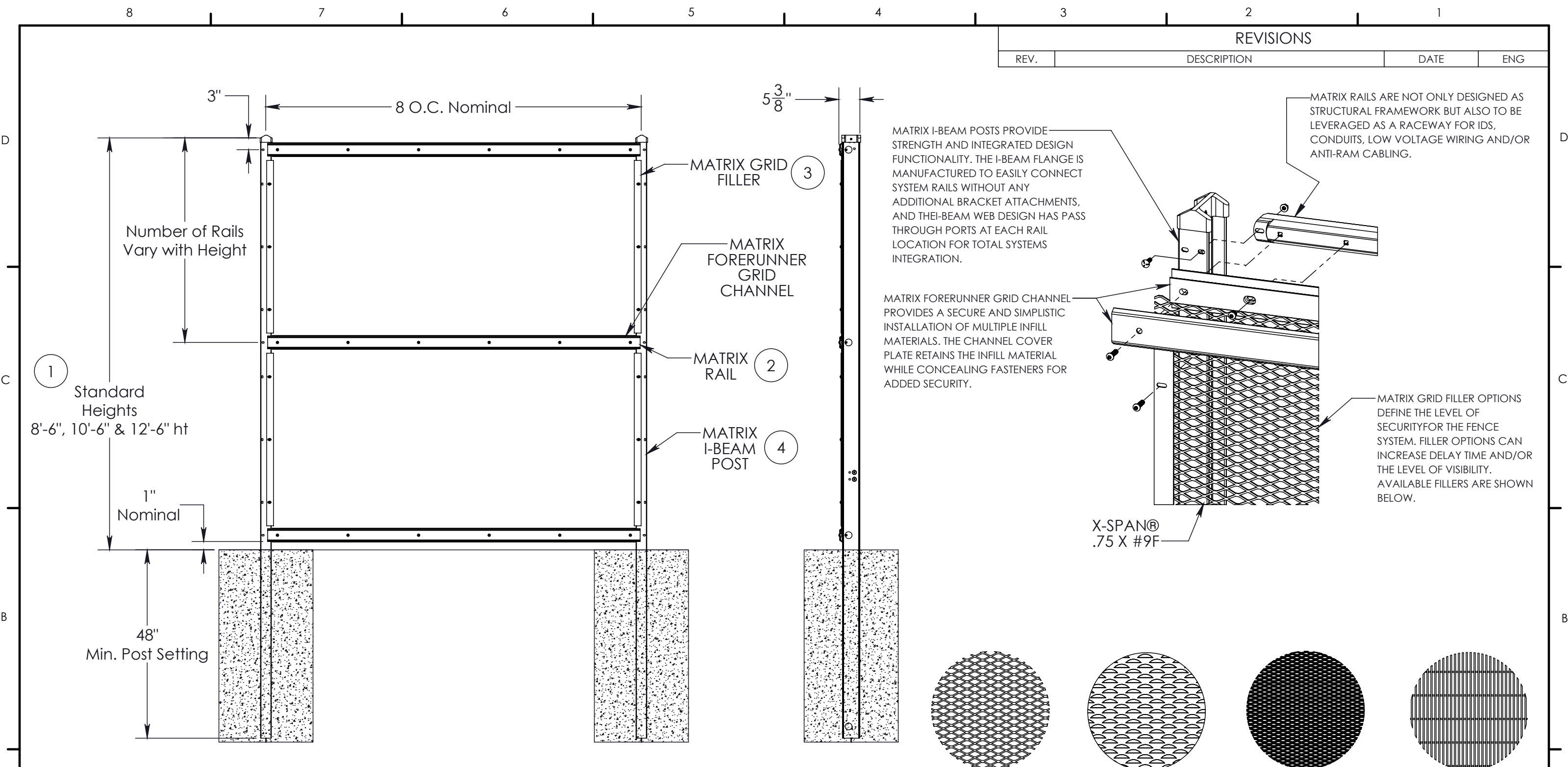


REVISIONS			
REV.	DESCRIPTION	DATE	ENG

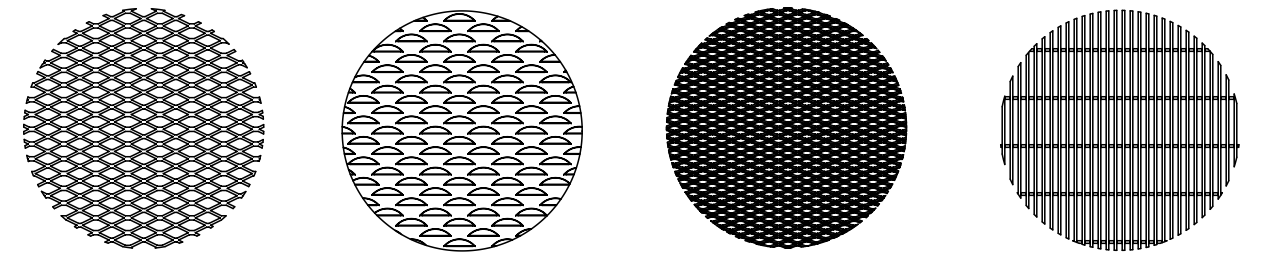


MATRIX I-BEAM POSTS PROVIDE STRENGTH AND INTEGRATED DESIGN FUNCTIONALITY. THE I-BEAM FLANGE IS MANUFACTURED TO EASILY CONNECT SYSTEM RAILS WITHOUT ANY ADDITIONAL BRACKET ATTACHMENTS, AND THE I-BEAM WEB DESIGN HAS PASS THROUGH PORTS AT EACH RAIL LOCATION FOR TOTAL SYSTEMS INTEGRATION.

MATRIX FORERUNNER GRID CHANNEL PROVIDES A SECURE AND SIMPLISTIC INSTALLATION OF MULTIPLE INFILL MATERIALS. THE CHANNEL COVER PLATE RETAINS THE INFILL MATERIAL WHILE CONCEALING FASTENERS FOR ADDED SECURITY.

MATRIX RAILS ARE NOT ONLY DESIGNED AS STRUCTURAL FRAMEWORK BUT ALSO TO BE LEVERAGED AS A RACEWAY FOR IDS, CONDUITS, LOW VOLTAGE WIRING AND/OR ANTI-RAM CABLING.

MATRIX GRID FILLER OPTIONS DEFINE THE LEVEL OF SECURITY FOR THE FENCE SYSTEM. FILLER OPTIONS CAN INCREASE DELAY TIME AND/OR THE LEVEL OF VISIBILITY. AVAILABLE FILLERS ARE SHOWN BELOW.



X-SPAN® .75" x #9F X-SCREEN® 1.5" x #14 X-SPAN® MODIFIED .5" x #13R (.188 STRAND) WIREWORKS® .5" x 3' x 8ga & 6ga

1 Standard Heights 8'-6", 10'-6" & 12'-6" ht

MATRIX GRID FILLER 3

MATRIX FORERUNNER GRID CHANNEL

MATRIX RAIL 2

MATRIX I-BEAM POST 4

- NOTES:
- ADDITIONAL HEIGHT OPTIONS AVAILABLE UPON REQUEST. (8'-6" HT SHOWN)
 - MATRIX RAIL QUANTITY CONFIGURATIONS:
 - 8'-6" HT/3 RAIL
 - 10'-6" HT/3 RAIL
 - 12'-6" HT/4 RAIL.
 - SEE MATRIX SPECIFICATION FOR STANDARD LIST OF ARCHIECTURAL MESH FILLER OPTIONS.
 - 4" I-BEAM USED FOR 8'-6", 10'-6" & 12'-6" HEIGHTS.

<p>NOTICE TO PERSONS RECEIVING THIS DRAWING AND/OR TECHNICAL INFORMATION Ameristar Perimeter Security USA Inc claims proprietary rights to the material disclosed hereon. This drawing and/or technical information is issued in confidence for engineering information only and may not be reproduced or used to manufacture anything shown or referred to hereon without direct written permission from Ameristar Perimeter Security USA Inc to the user. This drawing and/or technical information is the property of Ameristar Perimeter Security USA Inc and is loaned for mutual assistance to be returned when its purpose has been served.</p>	<p>UNLESS OTHERWISE SPECIFIED TOLERANCES</p> <p>X.X ± .06 X.XX ± .03 X.XXX ± .02 ANGLES ± 0.5° FRACTIONS ± 1/8 SURFACE FINISH 63</p>	<p>DRAWING COMPLIES WITH ASME Y14.5M - 1994</p> <p>INCH MM</p>	<p>MATERIAL SEE BOM</p>	<p>MATRIX ARCHITECTURAL PRINT MATRIX II</p>			
	<p>HEAT TREATMENT</p>	<p>DATE CREATED 10/21/2019</p>	<p>DRAWN BY budbis</p>	<p>DESIGNED BY budbis</p>	<p>DOCUMENT ID</p>	<p>SCALE 1:24</p>	<p>SIZE B</p>
	<p>SURFACE/FINISH</p>	<p>MASS 347.00 lb</p>	<p>VOLUME 1442.79 in³</p>	<p>SURFACE AREA 28248.41 in²</p>	<p>DRAWING NUMBER (ALT ID) MATRIX ARCHITECTURAL</p>		
	<p>THIRD ANGLE PROJECTION</p>	<p>CONFIGURATION Default</p>		<p>LEGACY ID</p>	<p>SHEET 1 OF 1</p>		

ASSA ABLOY

Ameristar Perimeter Security USA Inc
Tulsa