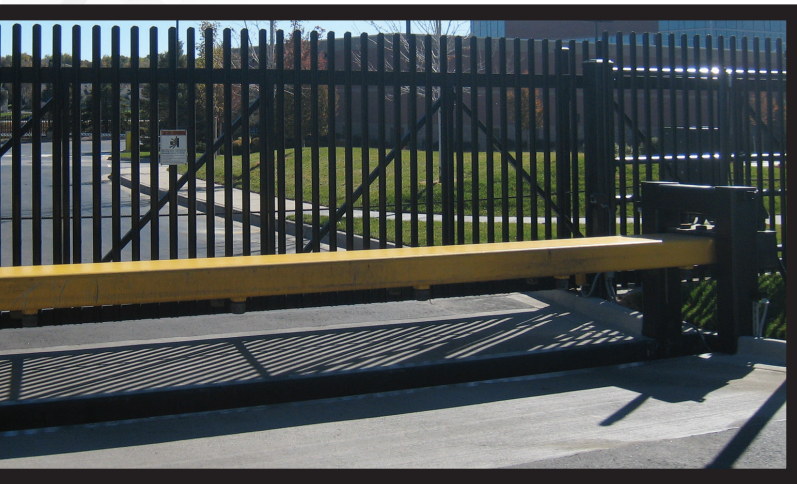




PATRIOT

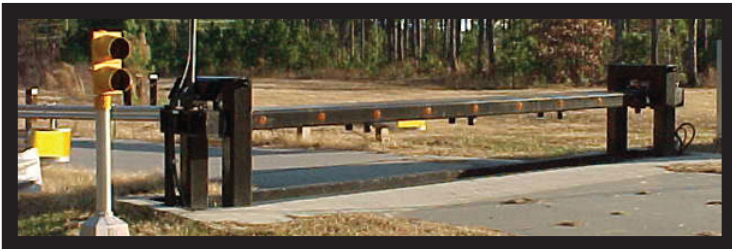
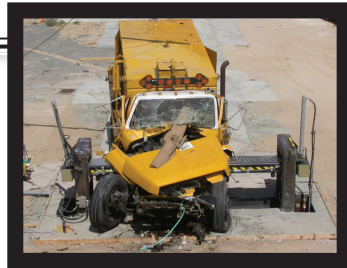
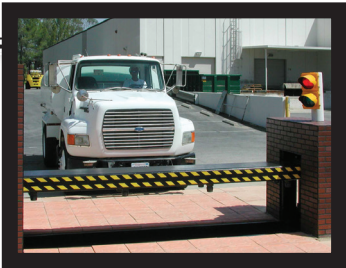
TM

ANTI-RAM CERTIFIED CRASH BEAM



Patriot *rising beam barriers* offer the highest level of protection for entry control access. Traversing a maximum distance of 24', the Patriot beam barrier *blocks entire roadways from any potential threat or unauthorized vehicle.*

K12



SECURITY ADVANTAGES

- ▶ *Installing the rising beam barrier within close proximity to an entry point enables the Patriot to work in tandem with a gate system to control vehicular traffic*
- ▶ *The Patriot crash beams' primary excavation is outside the roadway opening, allowing minimal excavation across entry, thus avoiding underground utilities or obstructions*
- ▶ *Deployment rate of only one second when EFO (emergency fast operation) control is added to this system*





ANTI-RAM CERTIFIED CRASH BEAM

CRASH BEAM

STANDARD FEATURES

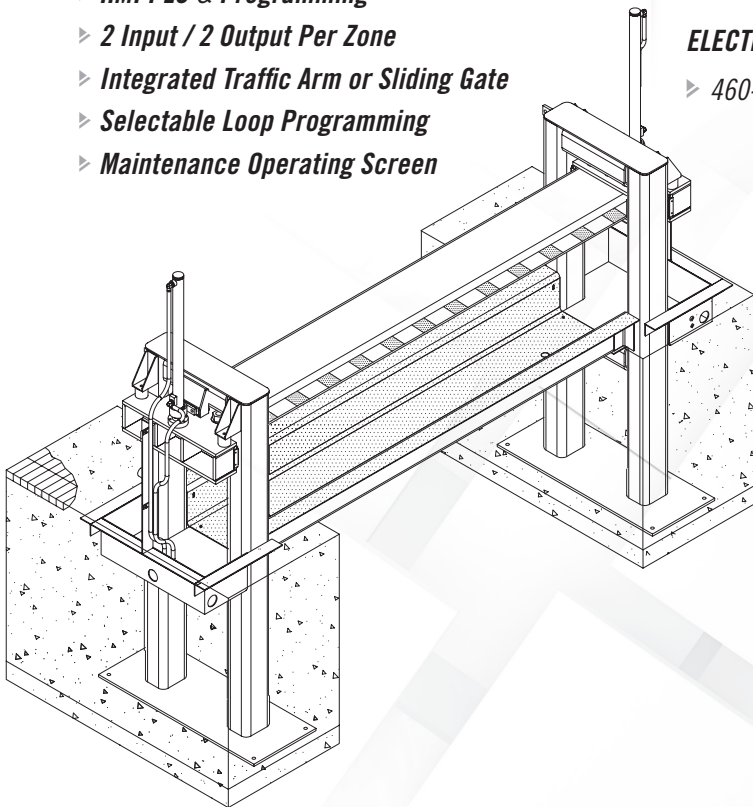
- ▶ **Standard Openings / 12', 16', 20' & 24'**
(available in custom sizes in 2' increments up to 24')
- ▶ **Barrier Painted Finish**
- ▶ **Barrier-Down Position Sensor**
- ▶ **Powder Coat Finish**
- ▶ **Weather Proof HPU Enclosure**
- ▶ **5 HP Hydraulic Power Unit**
- ▶ **Hydraulic Oil Filter**
- ▶ **Low/High Oil Temp Sensor**
- ▶ **208-240 VAC / 60 HZ / 3-Phase**
- ▶ **Voltage Circuit Protection**
- ▶ **Single Manual Reserve Cycle**
- ▶ **Manual Hand Pump**
- ▶ **PLC Color Touch Screen Controls**
- ▶ **HMI PLC & Programming**
- ▶ **2 Input / 2 Output Per Zone**
- ▶ **Integrated Traffic Arm or Sliding Gate**
- ▶ **Selectable Loop Programming**
- ▶ **Maintenance Operating Screen**

OPTIONAL FEATURES

- ▶ **Main Operator Control Panel - Touch/Push-button**
- ▶ **Remote Operator Control Panel - Touch/Push-button**
- ▶ **Barrier-Up Position Sensor**
- ▶ **7.5 HP or 10HP Hydraulic Power Unit**
- ▶ **Hydraulic Oil Heater / Cooler**
- ▶ **Emergency Fast Operation (EFO)**
- ▶ **Single Channel Vehicle Detector Module**
- ▶ **Battery Backup**
- ▶ **Traffic Signal Lights**
- ▶ **Wrong Way and Over Speed Detection**
- ▶ **HPU Enclosure Tamper Switches, Strobe Light & Horn**
- ▶ **HPU Enclosure Convenience Light, A/C Unit & Custom Finish**
- ▶ **Custom Painted Finish or Decorative Sleeve**

ELECTRICAL OPTIONS

- ▶ **460-480 VAC / 60HZ / 3-PHASE**



#9832 | REVISED 08/2020

