



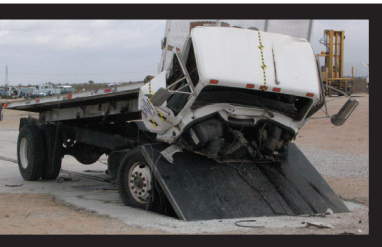
# SENTINEL™

## SHALLOW MOUNT ANTI-RAM WEDGE



Sentinel vehicle barriers are *designed for maximum perimeter entry security. This crash test certified wedge features a shallow installation depth, automatic operation, and installs flush to the finished roadway when retracted.*

**K12**



SECURITY ADVANTAGES

- *38" height when fully deployed*
- *Requires only 19" of excavation allowing 12" for barrier height & 7" for foundation pad*
- *Deployment rate of only one second when EFO (emergency fast operation) control is added to this system*



## SHALLOW MOUNT ANTI-RAM WEDGE

### HYDRAULIC WEDGE

#### STANDARD FEATURES

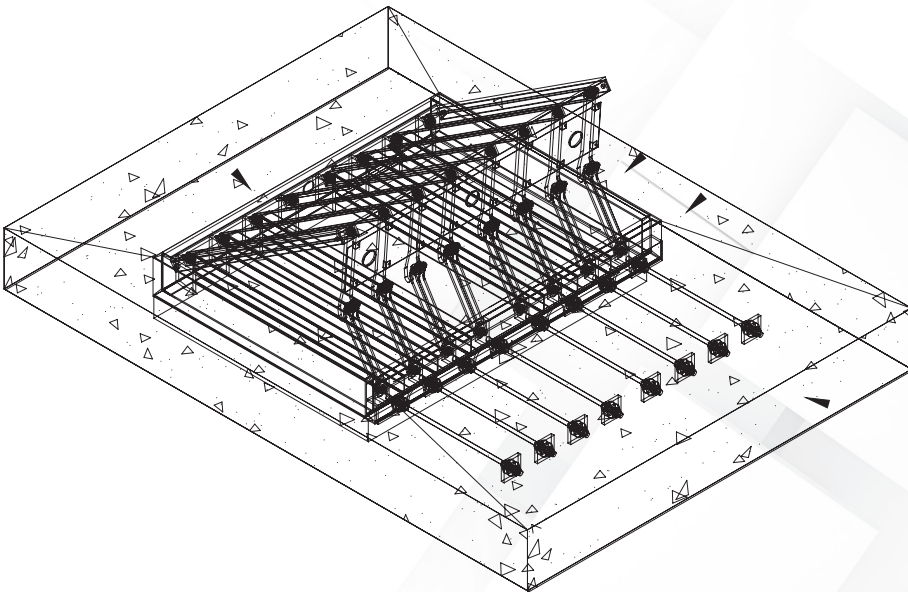
- ▶ Standard Widths / 8', 10' & 12'
- ▶ Anti-Skid Top Plate
- ▶ Barrier Paint Finish
- ▶ Barrier-Down Position Sensor
- ▶ Powder Coat Finish
- ▶ Weather Proof HPU Enclosure
- ▶ 5 HP Hydraulic Power Unit
- ▶ Hydraulic Oil Filter
- ▶ Low/High Oil Temp Sensor
- ▶ 208-240 VAC / 60 HZ / 3-Phase
- ▶ Voltage Circuit Protection
- ▶ Single Manual Reserve Cycle
- ▶ Manual Hand Pump
- ▶ PLC Color Touch Screen Controls
- ▶ HMI PLC & Programming
- ▶ 2 Input / 2 Output Per Zone
- ▶ Integrated Traffic Arm or Sliding Gate
- ▶ Selectable Loop Programming
- ▶ Maintenance Operating Screen

#### OPTIONAL FEATURES

- ▶ Main Operator Control Panel - Touch/Push-button
- ▶ Remote Operator Control Panel - Touch/Push-button
- ▶ Barrier-Up Position Sensor
- ▶ 7.5 HP or 10HP Hydraulic Power Unit
- ▶ Hydraulic Oil Heater / Cooler
- ▶ Emergency Fast Operation (EFO)
- ▶ Single Channel Vehicle Detector Module
- ▶ Battery Backup
- ▶ Traffic Signal Lights
- ▶ Wrong Way and Over Speed Detection
- ▶ HPU Enclosure Tamper Switches, Strobe Light & Horn
- ▶ HPU Enclosure Convenience Light, A/C Unit & Custom Finish
- ▶ Custom Painted Finish or Decorative Sleeve

#### ELECTRICAL OPTIONS

- ▶ 460-480 VAC/ 60HZ / 3-PHASE



#9833 | REVISED 08/2020

