

**STANDARD FEATURES:**

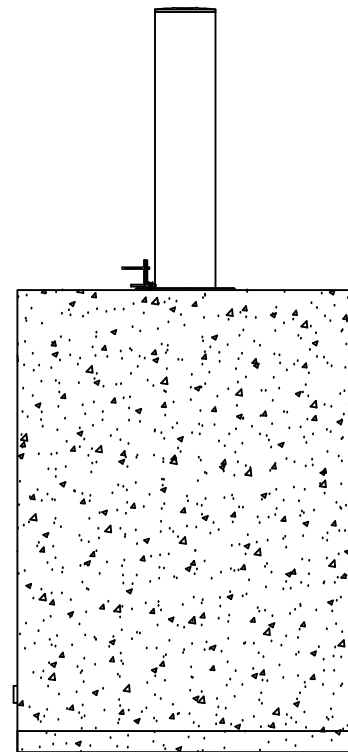
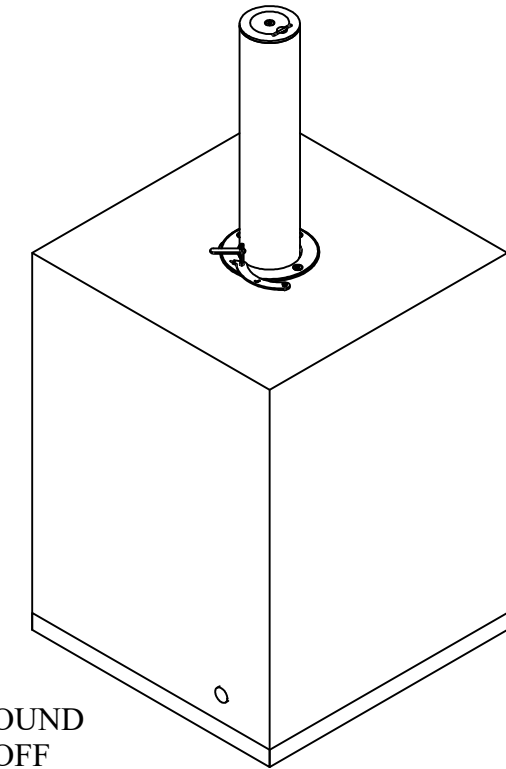
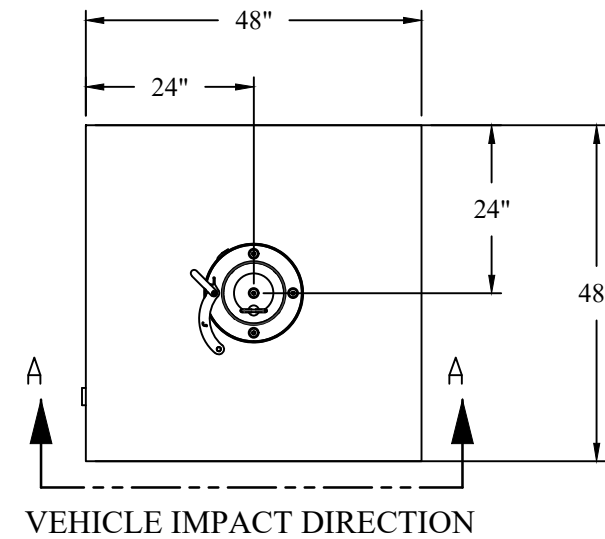
- CERTIFIED ASTM F2656 M30/P1 (DP\* 3.05 LF)  
○ TESTED AS A SINGLE BOLLARD CONFIGURATION
- CLEAR OPENING 48"
- HYDRUALIC POWER UNIT (HPU) AND OPERATOR CONTROLS
- LOST CASING DESIGN
- HOT DIPPED GALVANIZED STEEL
- \*DYNAMIC PENETRATION

**OPTIONAL:**

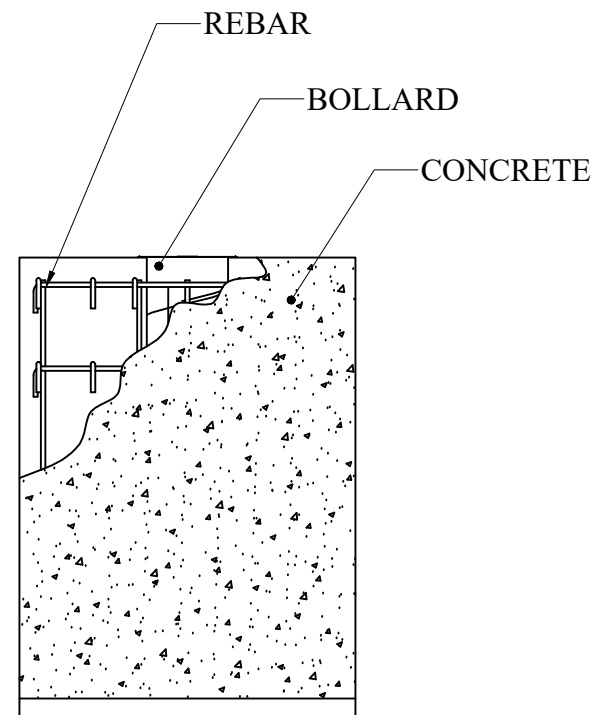
- CUSTOM COLORS
- STAINLESS STEEL SLEEVES
- COLD WEATHER KITS

**NOTES:**

- INSTALLATION BY OTHERS
- REFER TO PROJECT-SPECIFIC SUBMITTALS FOR SPECIFICATIONS AND DETAILS
- REACH OUT TO YOUR AMERISTAR BARRIER REPRESENTATIVE FOR A FULL LIST OF OPTIONS AND PROJECT COORDINATION AT PH 866-467-2773 OR AMERISTARBARRIERS@ASSAABLOY.COM



DEPLOYED



UNDEPLOYED

