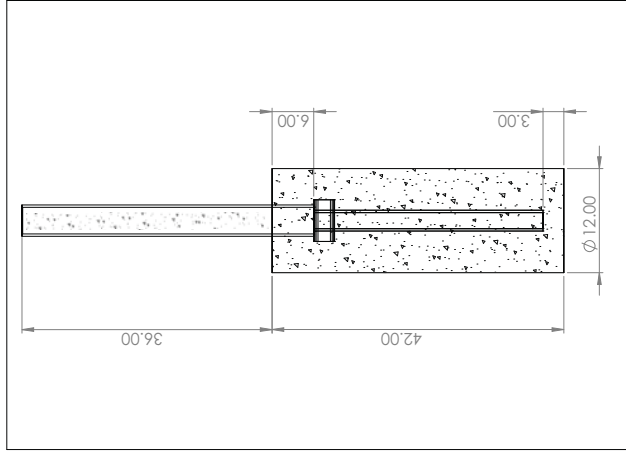
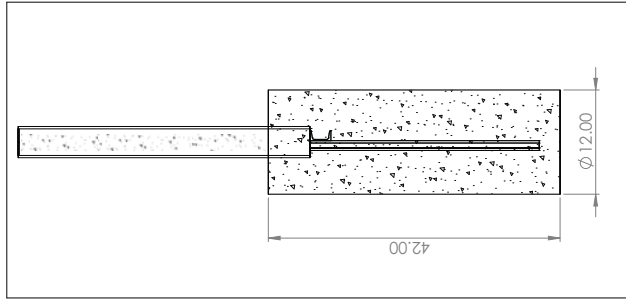


# S10 DEEP MOUNT BOLLARD ASSEMBLY

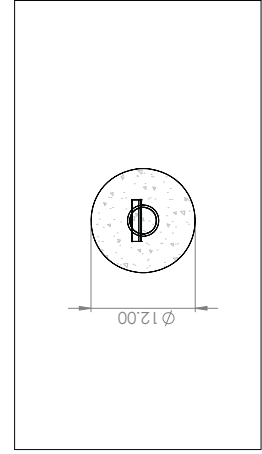
## SINGLE BOLLARD ASSEMBLY



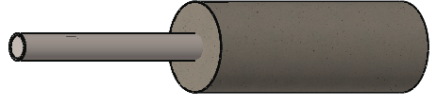
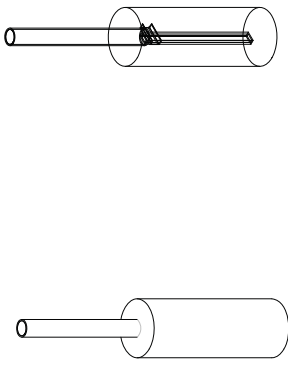
FRONT ELEVATION



SIDE VIEW



PLAN (TOP) VIEW



MATERIAL TABLE		
DESCRIPTION	UNIT	QTY
BOLLARD(S)	EA	
CONCRETE (3500 PSI)	CY	

**NOTES**

1. ALL MATERIALS (BOLLARDS) WILL BE PROVIDED BY ATLAS EXCEPT FOR THE CONCRETE PROVIDED BY OTHERS
2. THE CONCRETE SHALL BE A MINIMUM OF 3,500 PSI
3. PROVIDE A MINIMUM CONCRETE COVER OF 3" AT THE BOTTOM AND 2" AT THE TOP AND SIDES. USE BLOCKS OR SPACERS AS NEEDED
4. BOLLARDS SHALL BE FILLED WITH CONCRETE. PROVIDE DOME/SLOPED CONCRETE TOP TO SHED WATER
5. BOLLARDS ARE AVAILABLE IN A FLAT OR SLOPED TOP. STEEL CAPS AND OTHER CUSTOM CONFIGURATION OPTIONS AVAILABLE
6. STANDARD BOLLARD SIZE IS 4"(4.5" OD) AND WITH 36" HEIGHT. CUSTOM HEIGHTS ARE AVAILABLE

THIS INFORMATION IS PROPRIETARY AND CONFIDENTIAL TO ATLAS SECURITY PRODUCTS, INC. (ASPI) AND IS ONLY FOR THE USE OF THE INDIVIDUAL OR ENTITY TO WHOM IT WAS DELIVERED. NO PART OF THIS DOCUMENT MAY BE DISTRIBUTED, REPRODUCED OR UTILIZED IN ANY FORM OR BY ANY MEANS, ELECTRONIC OR MECHANICAL, INCLUDING PHOTOCOPIING, WITHOUT WRITTEN PERMISSION FROM ASPI. THIS DOCUMENT IS TO BE RETURNED TO ASPI UPON REQUEST.

**ATLAS**  
SECURITY PRODUCTS INC  
ATLASBARRIERS.COM

---

NAME OF CLIENT: \_\_\_\_\_

PROJECT: \_\_\_\_\_ DWG DATE: \_\_\_\_\_ DWG BY: \_\_\_\_\_

SCALE: N/A UNITS: IN

TITLE: S10 RATED DEEP MOUNT BOLLARD ASSEMBLY INSTALLATION DRAWING

DWG NO: ASPI-BDM-S10 - PAGE 1/1

PH#: 866-47-ATLAS (866-472-8527) PO BOX 59423, ROCKVILLE, MD 20859

